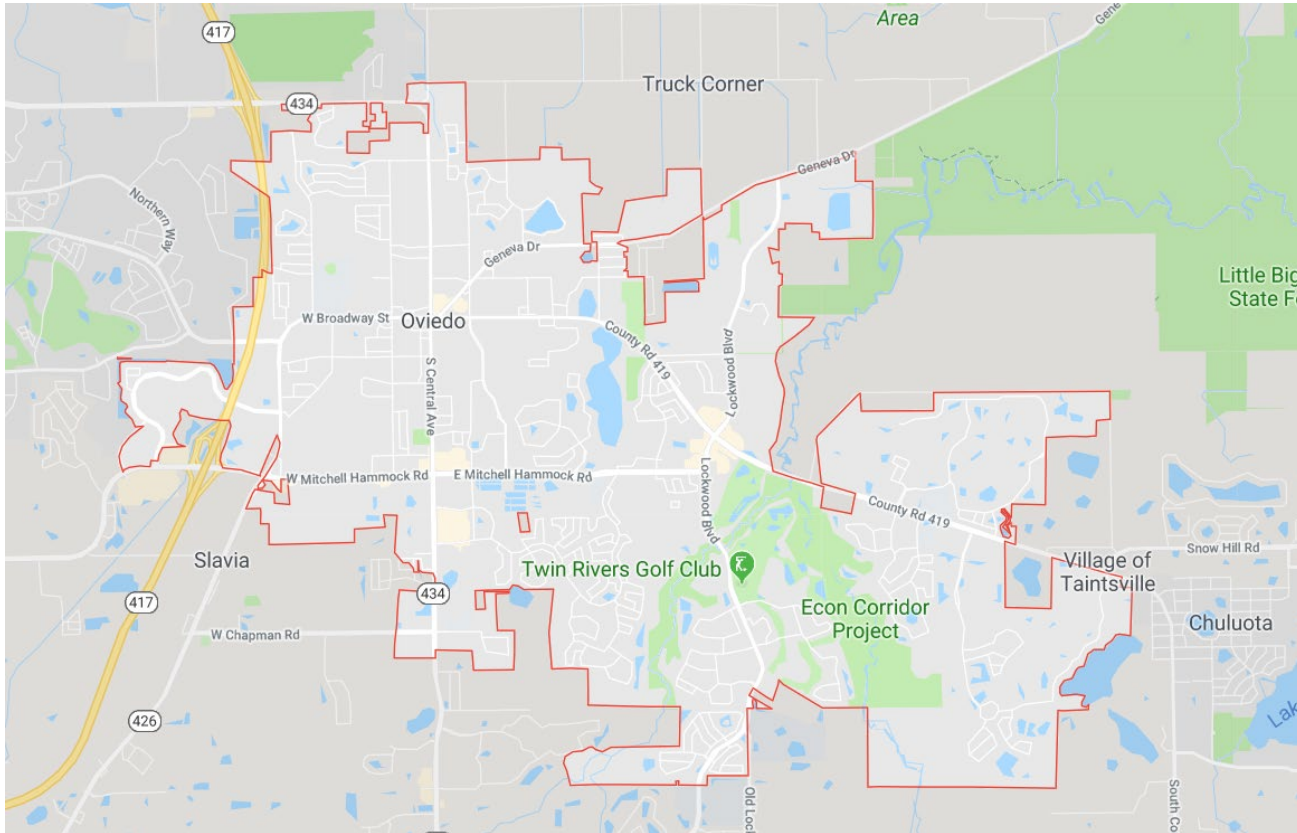


DEVELOPMENT UPDATE

City of Oviedo 2019



OVIEDO



Seminole County
Population 39,739
16 square miles

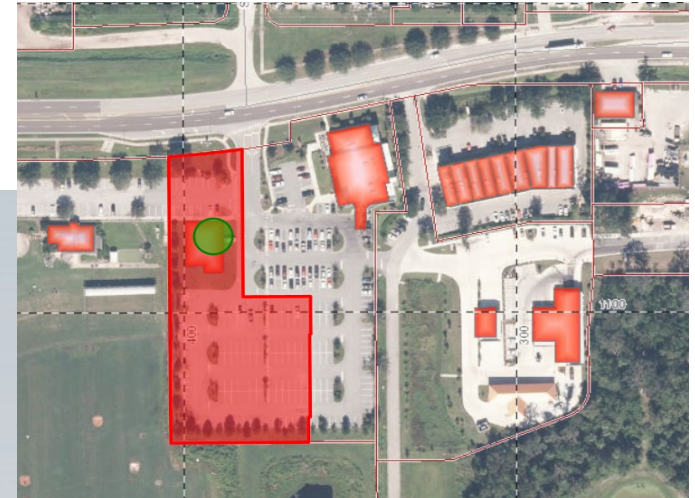
Background information

- Architectural and Urban design Standards
- Public Art in the City
- Communities for a Lifetime
- Healthy Weight Community Champion Program
- Create destination places
- Balance out the commercial versus the residential use
- Provide more housing options to residents
- Provide a good balance between development and green spaces (tree preservation)

COMMERCIAL DEVELOPMENT

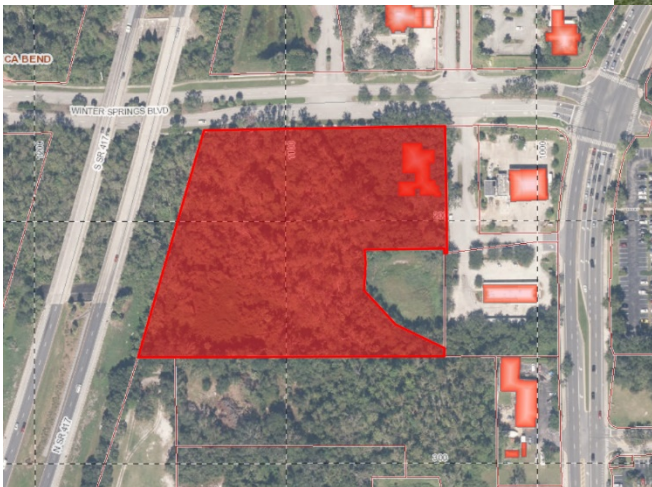
Under construction or under review/approval

TIRE CHOICE OVIEDO



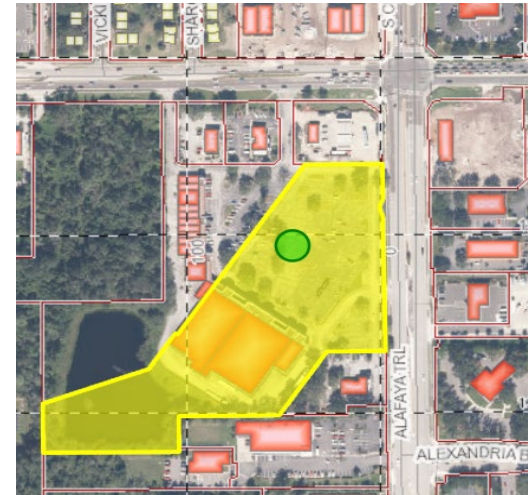
Commercial building: 5,280 square foot building for a tire store with seven (7) bays

OVIEDO PET RESORT



Commercial building: 4,600 square foot building for a pet resort

CENTRAL SQUARE ANCHOR BLDGS



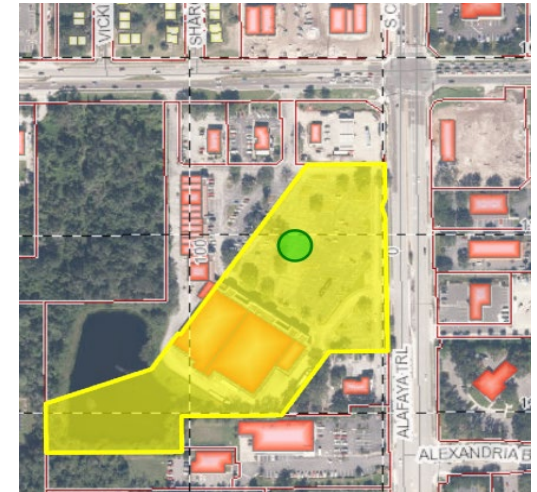
Commercial building: (62,000) square feet of shopping center with three anchor stores, including a grocery store (Sprouts);

CENTRAL SQUARE RETAIL



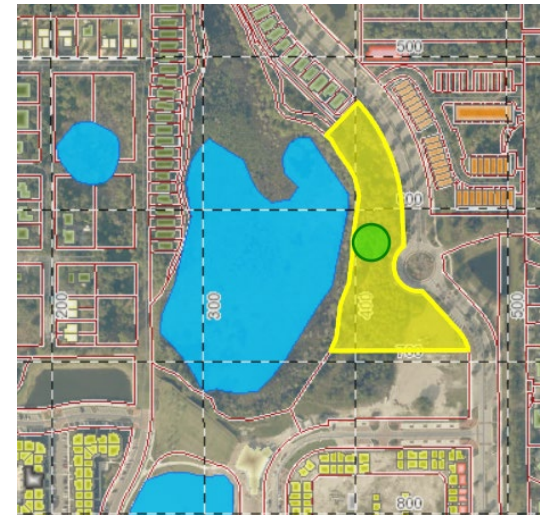
Commercial building: (18,281) square feet of retail

CENTRAL SQUARE OUTPARCEL



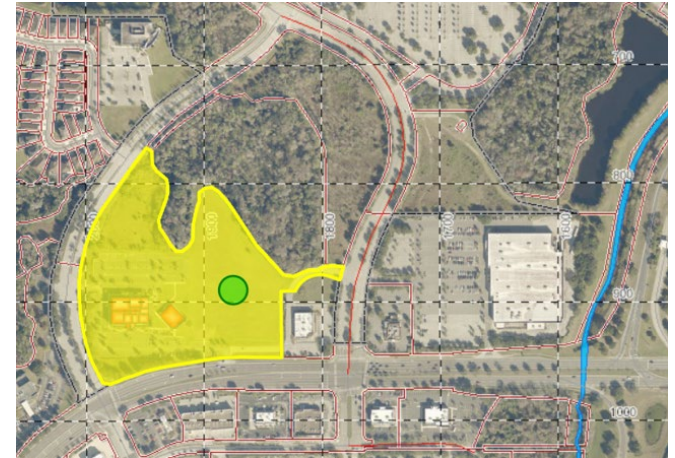
Commercial building: (9,000) square feet of retail

STERLING MARKETING



Mixed-use building: (21,687) sq. ft. of office + 1 residential unit (penthouse)

Florida Hospital ED

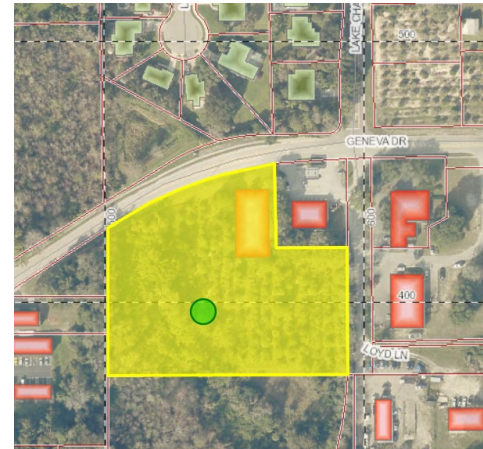


(18,400) sq. ft. of a 24-exam room
freestanding emergency department

Infotainment Center



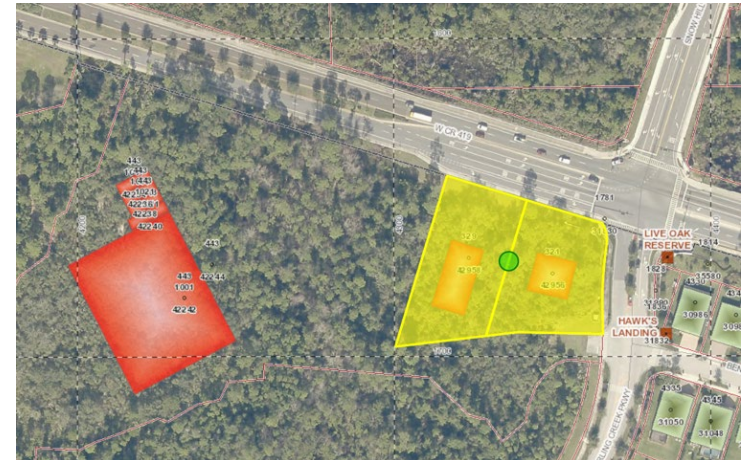
(19,092) sq. ft. of office building



Shoppes at Sterling Creek



Building 1: (6,000) sf of commercial
Building 2: (4,007) sf of commercial



71 South Central Ave



(3,900) square feet of office

Doodle Bugs at Flagler Center



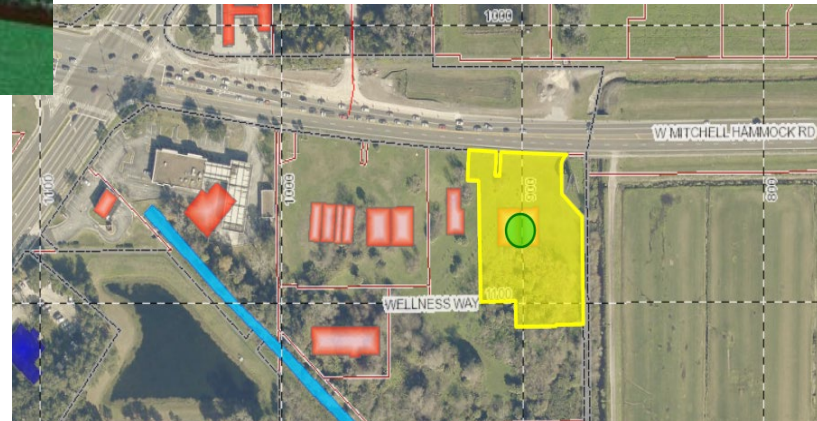
(12,990) square feet of a day care center



Chicken Salad Chick and Metro Diner



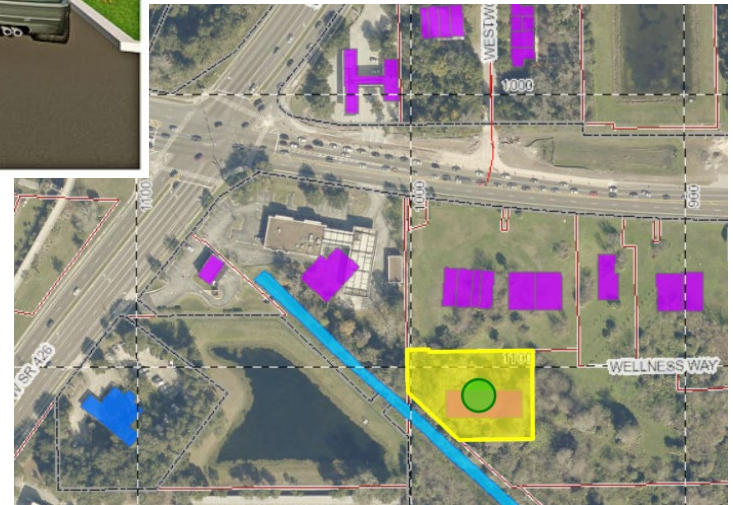
(2,784) sq. ft. drive-through restaurant
(3,641) sq. ft. of casual restaurant



Women's Care in Oviedo Point



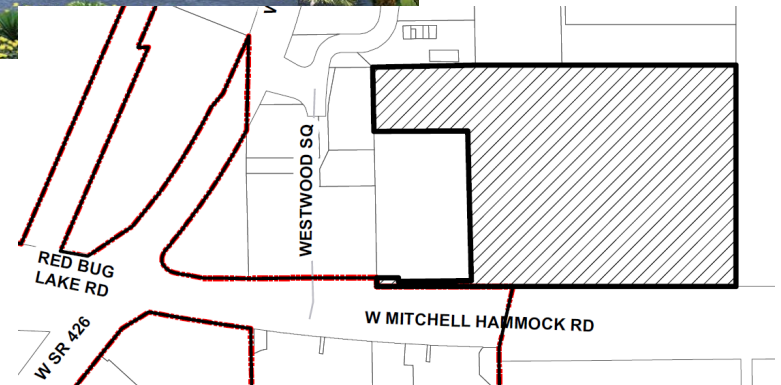
(8,060) sq. ft. of medical office



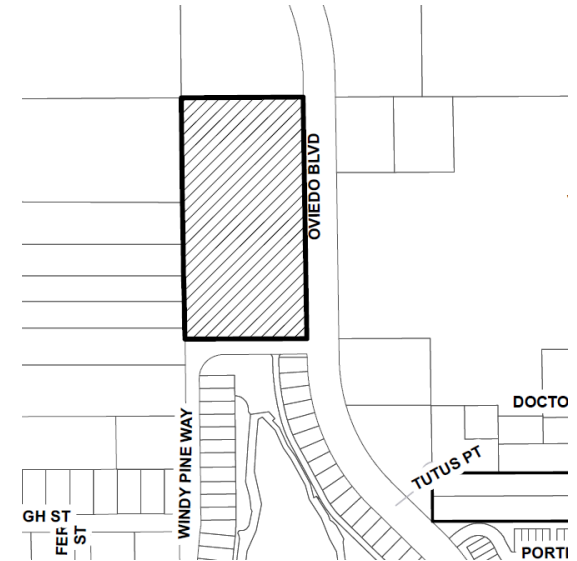
Dunkin Donuts & Jimmy Johns (Flagler Center)



(3,000) sq. ft. two drive-through restaurants



Adventus MedCi



60,000 sq. ft. 3-story medical office building (Building A)
31,168 sq. ft. parking garage + 77,920 sq. parking garage
39,904 sq. ft. 3-story medical office building (Building B)

RECENT ADDITIONS

Built and in operation

Goddard School



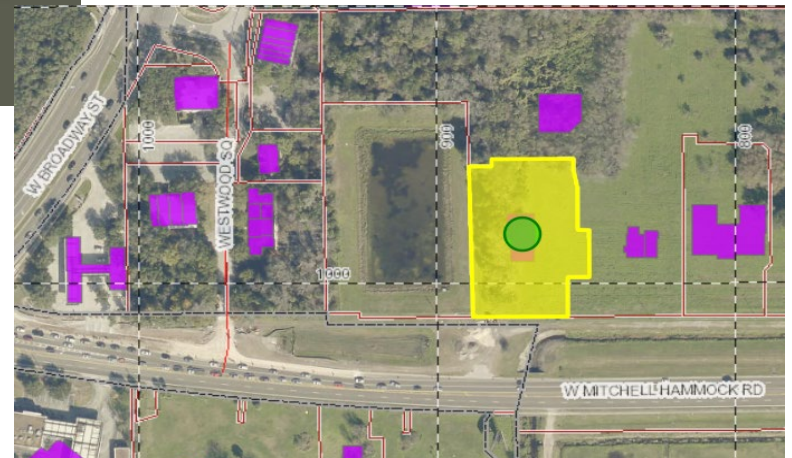
(10,936) sq. ft. day care facility
(1,200) sq. ft. covered recreational area



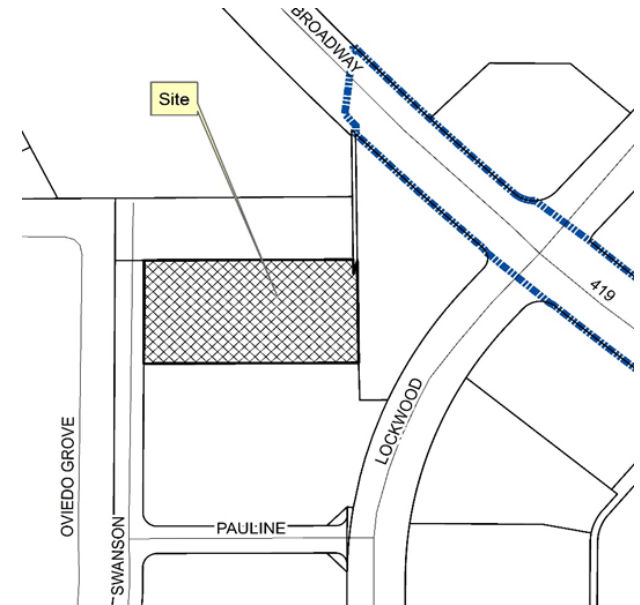
Culver's restaurant at Flagler Center



(4,500) sq. ft. of casual restaurant



Lockwood Self-Storage

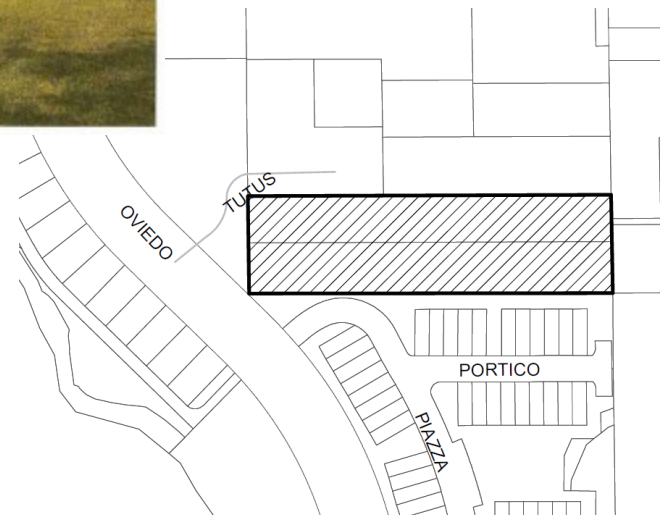


94,000 sq. ft. of self-storage building

Your Oviedo Dentist



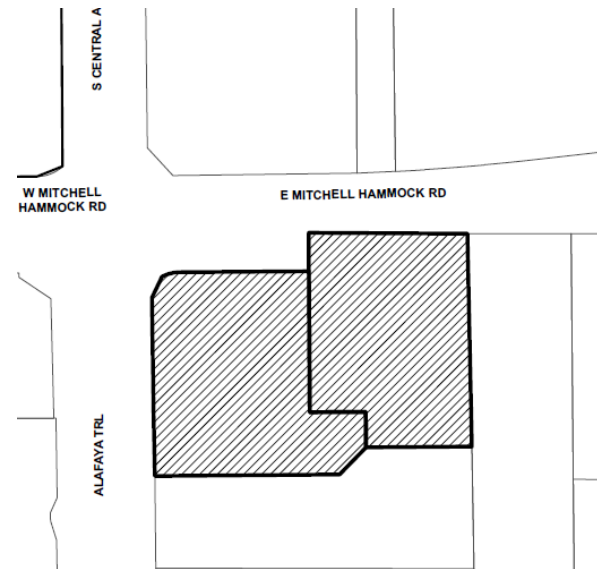
(6,125) sq. ft. of medical office
(1,578) sq. ft. addition



Chick-fil-A



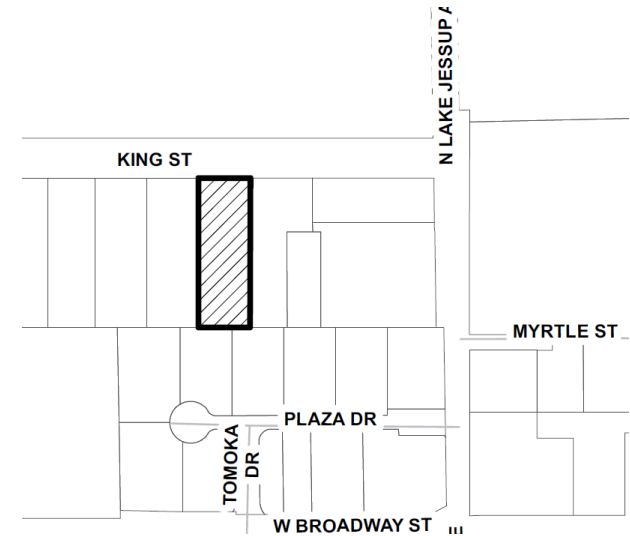
NORTH WEST PERSPECTIVE VIEW



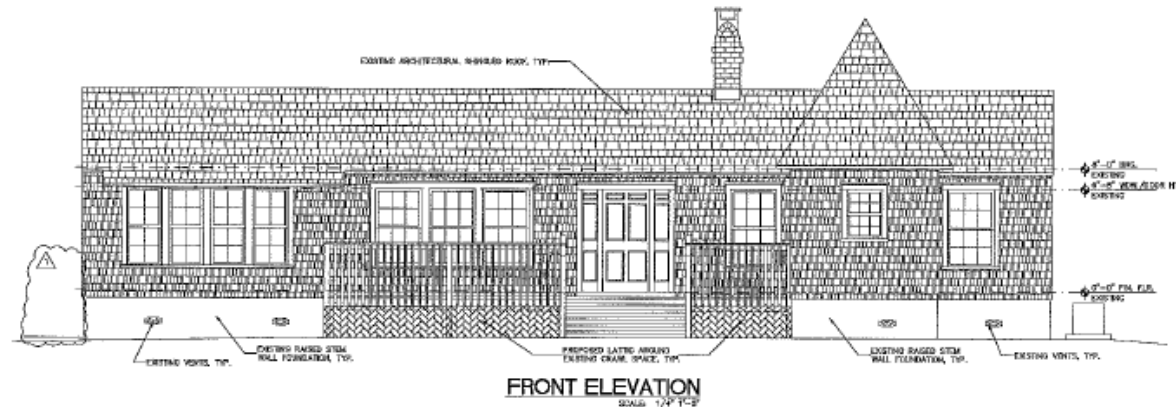
(4,989) sq. ft. drive-thru restaurant
(6,064) sq. ft. retail building



Gammage Office (conversion)



(1,827) sq. ft. of office



Stonehill Plaza



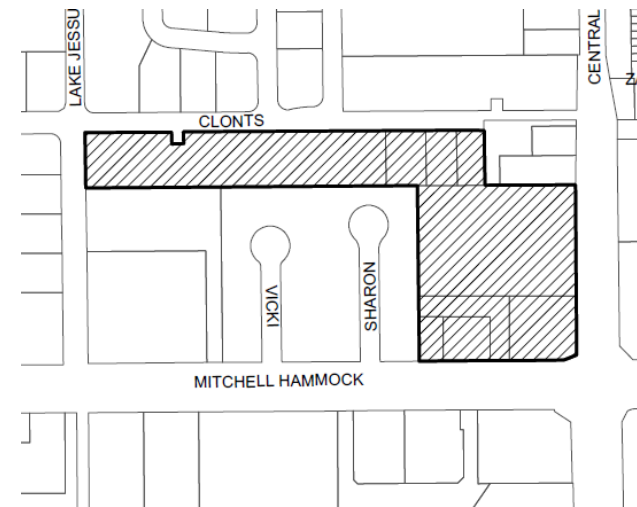
6,900 sq. ft. Building 1
7,900 sq. ft. Building 2
16,865 sq. ft. Building 3



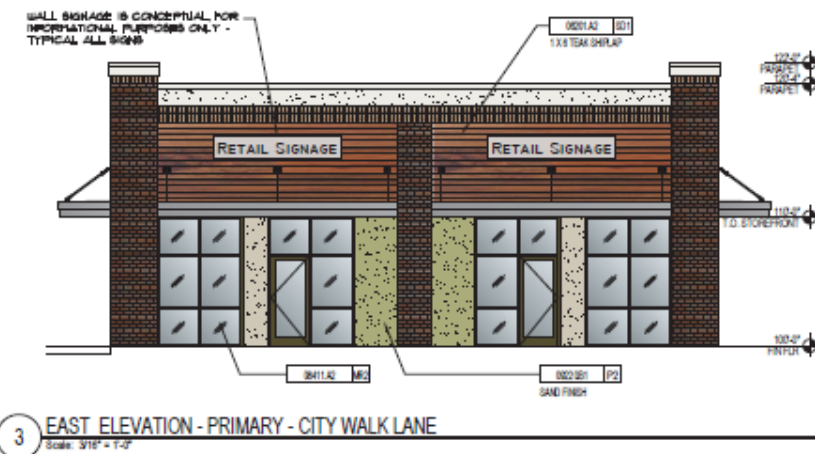
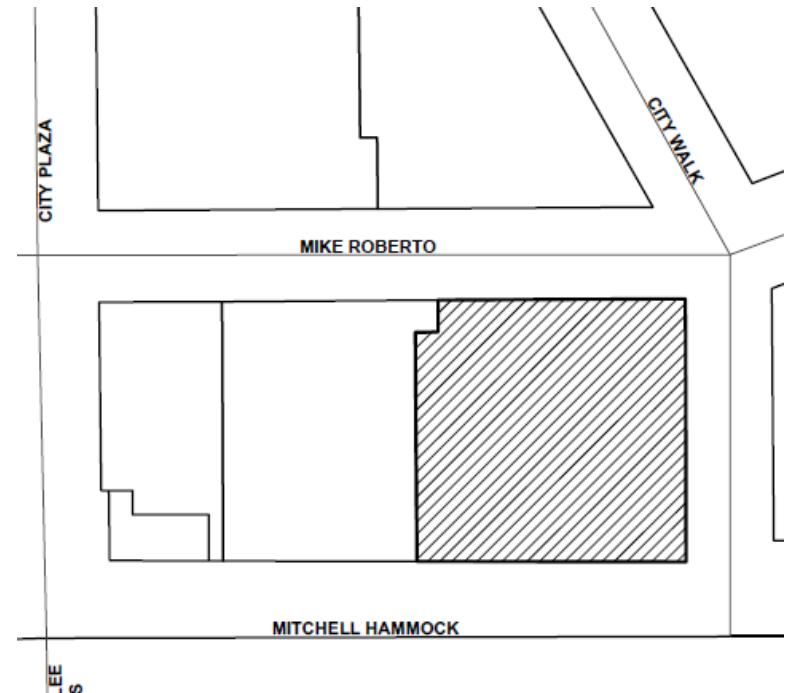
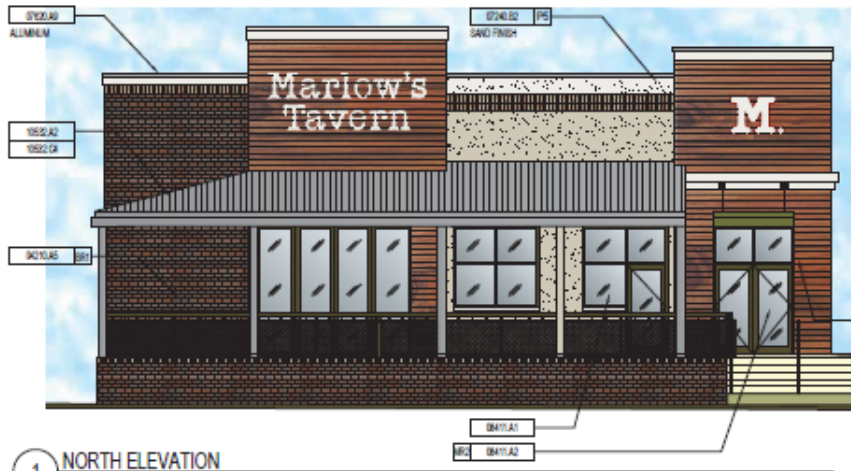
Taziki's



NATURAL BURGERS • FRIES • DOGS • CUSTARD • CRAFT BEERS • WINE



OOTP Lot 3 Marlow's Tavern & Maple Street Biscuit Company

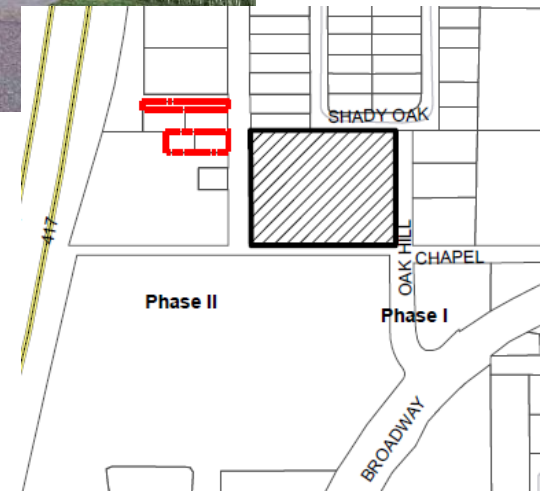


5,320 sq. ft. restaurant
2,430 sq. ft. retail

Creative World School



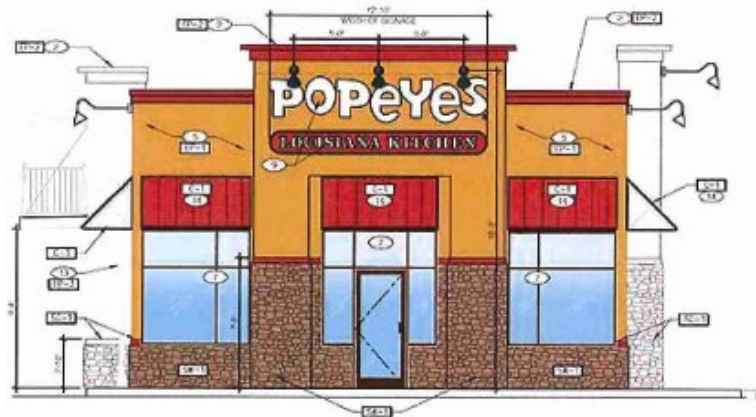
13,000 sq. ft. building for daycare use



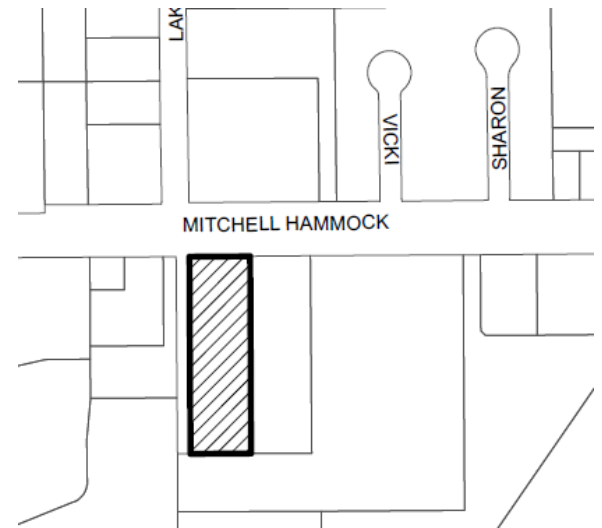
Popeye's



2 Entry Side Elevation (1)
Scale 1/8"=1'-0"



3 Front Elevation
Scale 1/8"=1'-0"

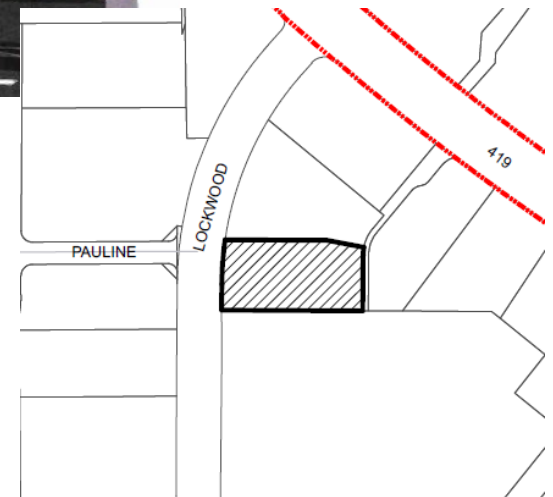


(2,497) sq. ft. drive-through restaurant

Verizon & Arby's



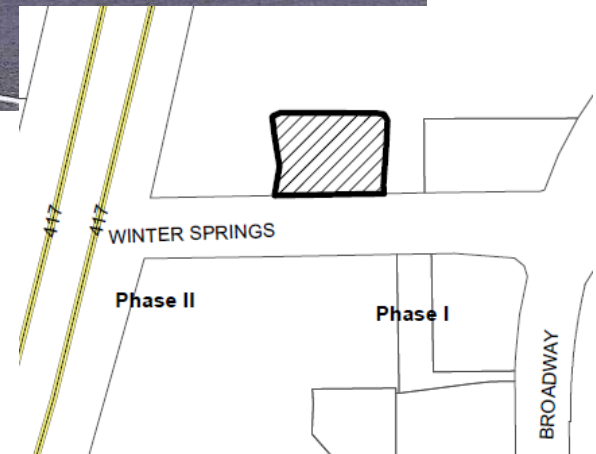
5,018 sq. ft. building for retail and fast-food restaurant



Oviedo Women's Health Center



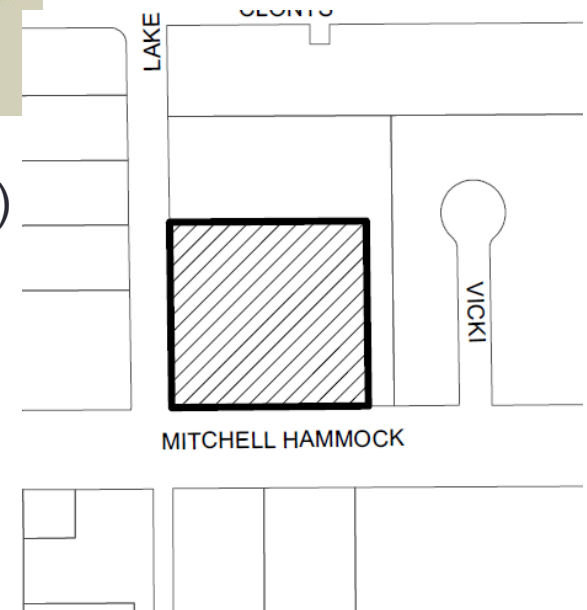
Redevelopment (3,097 sq. ft. bank building)
4,995 sq. ft. a medical office adding 1,898
sq. ft. of laboratory use



Outback



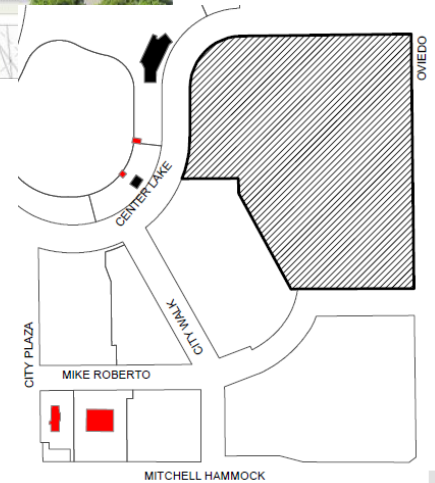
2,248 sq. ft. restaurant (redevelopment former Bojangles)



OOTP The Strand



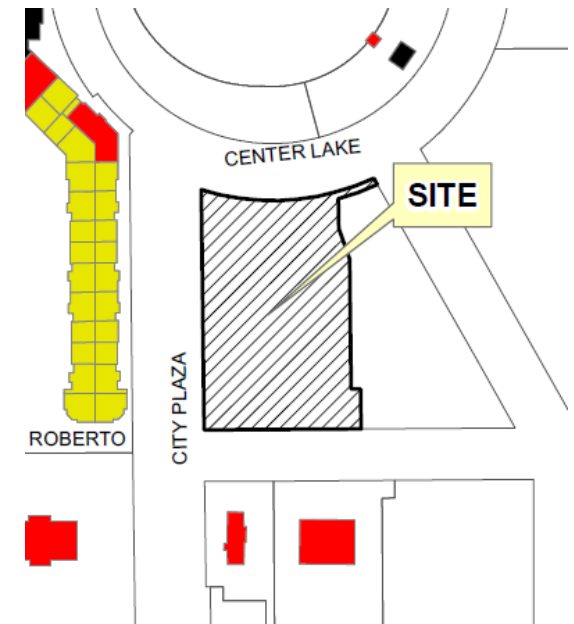
246 dwelling units (DU) and 10,358 sq. ft. of office/retail use



OOTP The Strand II

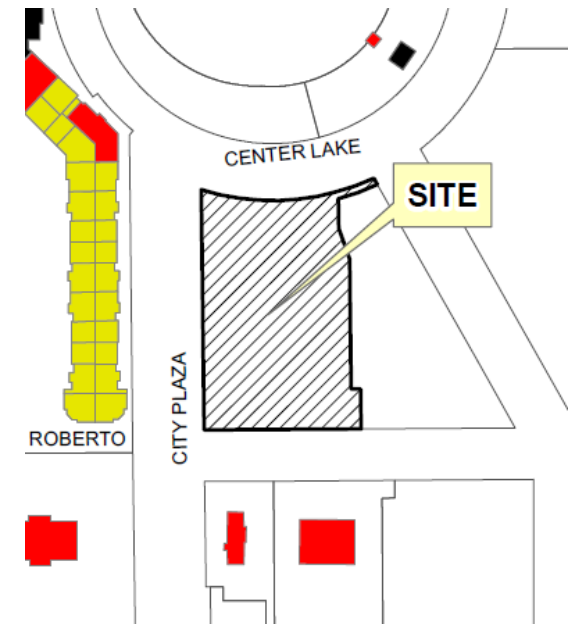


31 apartment units and fifteen thousand one hundred three 15,103 sq. ft. of retail and restaurant use



OOTP The Strand II

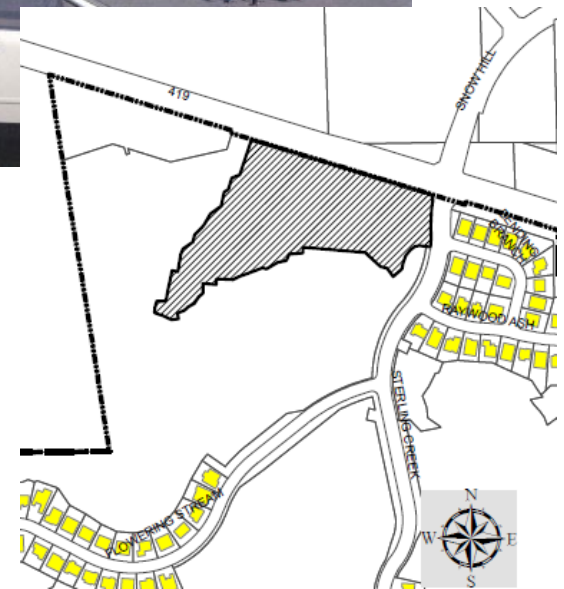
De La Vega & The Simple Greek



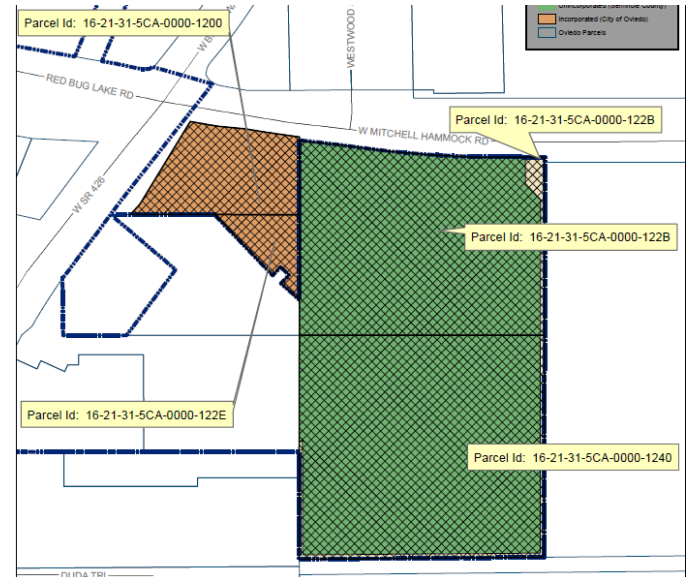
Sterling Creek Publix



52,878 sq. retail building (supermarket)



Oviedo Point (Next to Wawa)



Autism Center



3,500 sq. ft. of Commercial
(Autism Center)



Oviedo Medical Center (CFR Hospital)

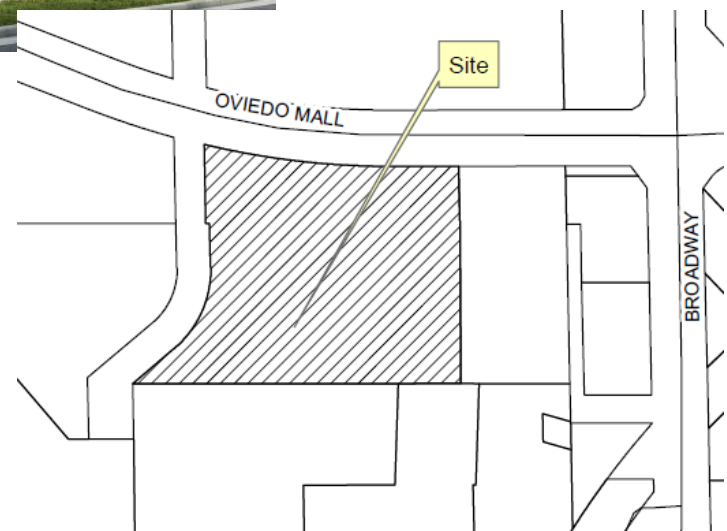


184,000 sq. ft. of Hospital
80,000 sq. ft. medical office

Oviedo Medical Village



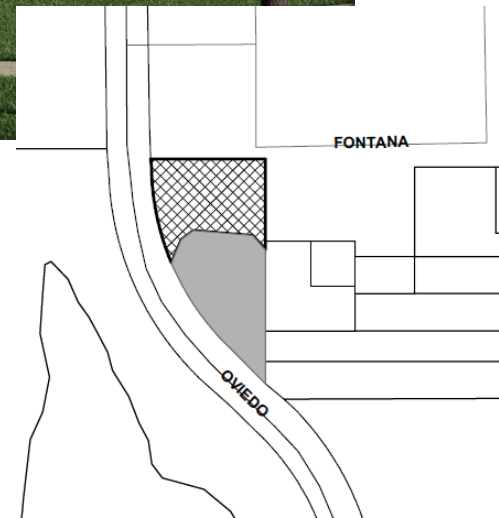
16,750 sq. ft. medical office building



Memory Lane



10,950 sq. ft. of an assisted living facility with
twenty (20) bedrooms/units



Shoppes at OOTP



2,118 sq. ft. coffee shop with drive thru and
(4,987) sq. ft. of restaurant and retail use



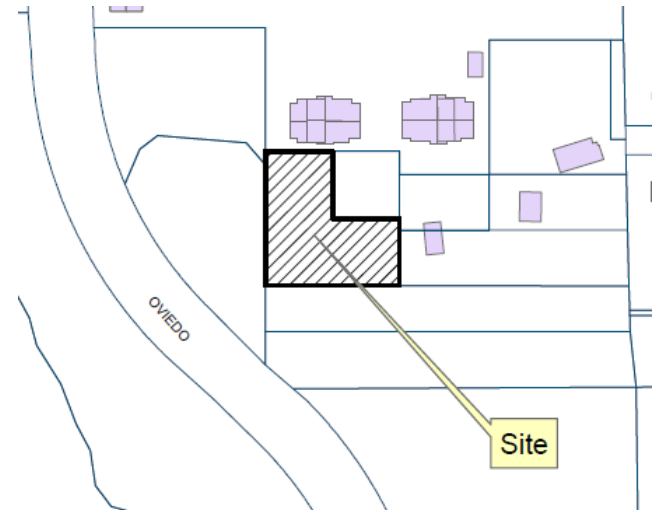
SOUTH ELEVATION



Tutus Dance Studio



5,263 sq. ft. of dance studio and nail salon

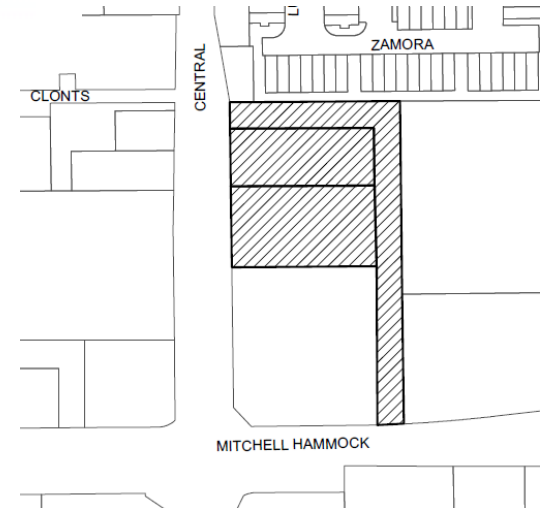


O'Reilly Auto Parts



SR 434 View

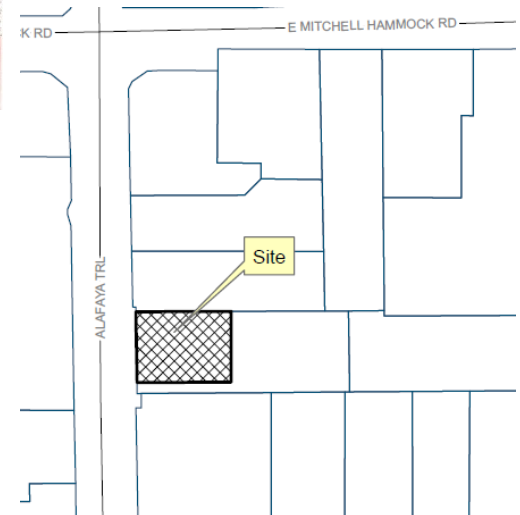
7,594 sq. ft. automotive general retail store



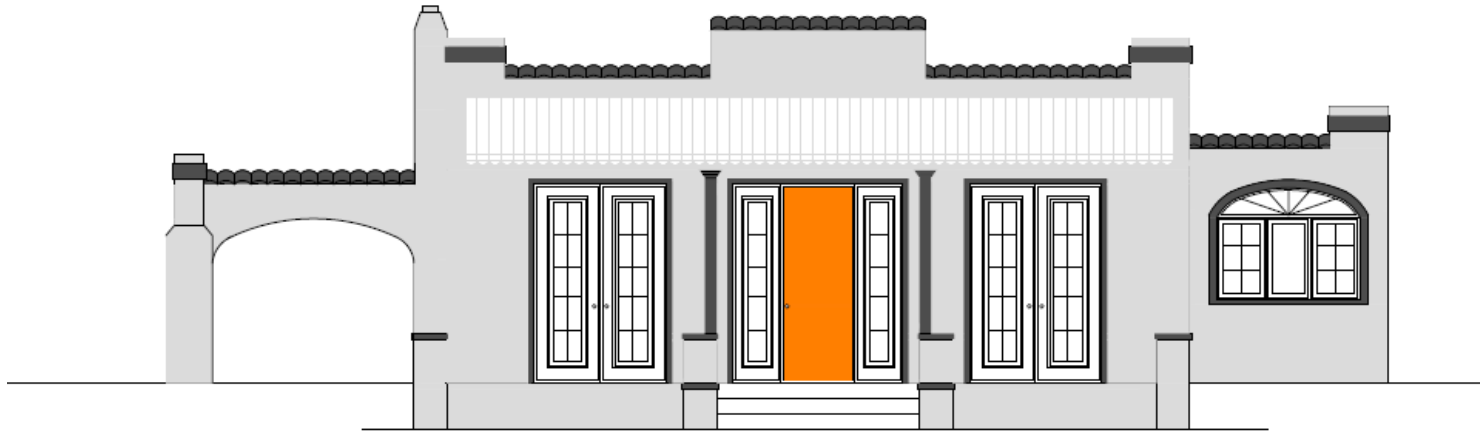
Oviedo Express Oil



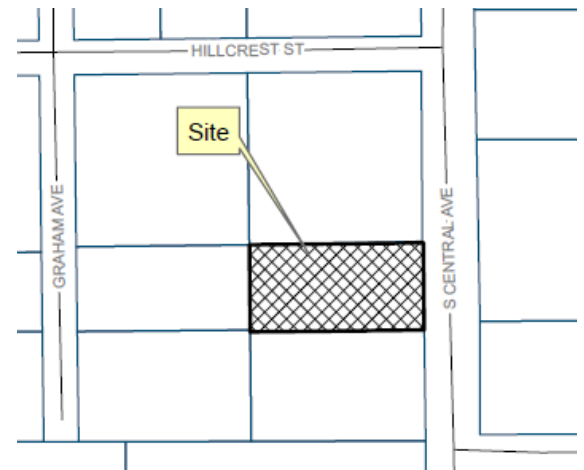
4,590 sq. ft. motor vehicle repair and maintenance shop



Orange Door gallery



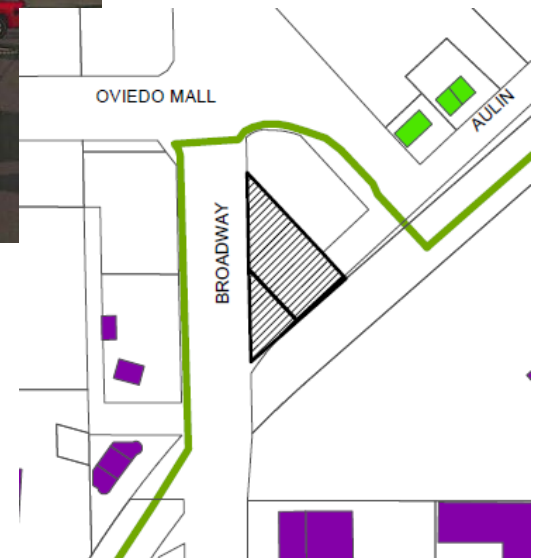
2,000 sq. ft. of commercial gift boutique



Amazon Stone



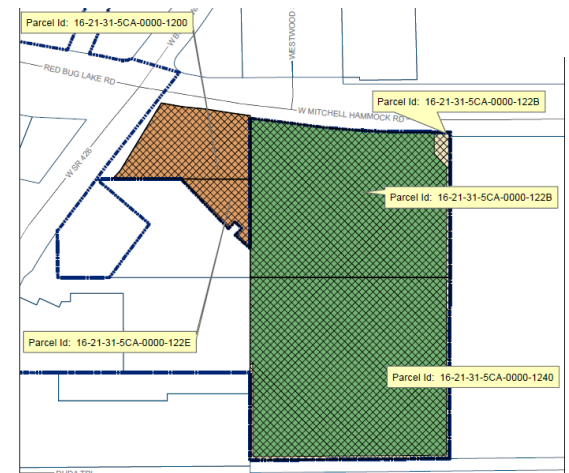
2,728 sq. ft. retail building



Wawa



6,119 sq. ft. of convenience store
5,900 gas pump canopy



RESIDENTIAL DEVELOPMENT

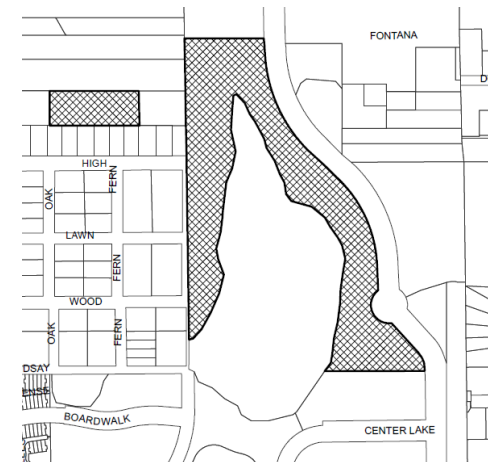
Residential Development

	Residential developments under construction	# DUs	Status
1	Southern Oaks Phase I	21	Under construction
2	Southern Oaks Phase II	22	Under construction
3	Foster Groves	89	Under construction
4	Oviedo Gardens	130	Under construction
5	Aulins' Landing Phase I	31	Completed
6	Aulins' Landing Phase II	17	Completed
7	Preserve at Oviedo on the Park	44	Completed
8	The Hamptons	170	Completed
9	Edward Stoner	70	Completed
10	Evans Square	30	Under construction
11	The Strand MU	248	Completed
12	The Strand II MU	31	Completed
13	Oviedo Park Terrace (Lot 12)	49	Under construction
14	Central Park Townhome	68	Under construction
15	Retreat at Lake Charm	52	Under construction
16	Hammock Park	23	Under construction
17	Andrew's Crossing	70	Under review
	Sub-Total	1165	

Preserve at Oviedo on the Park



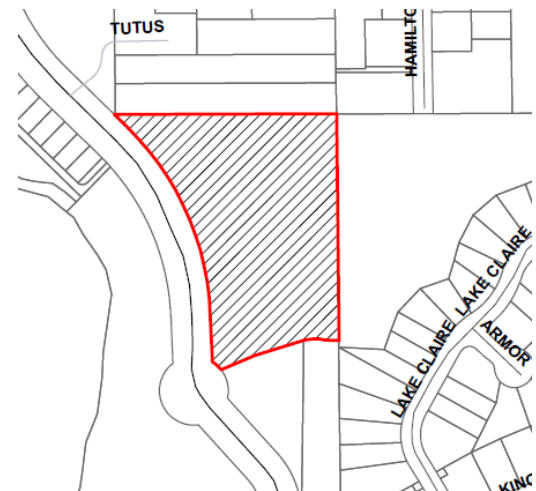
44 single family residential lots



Oviedo Terrace (OOTP Lot 12)



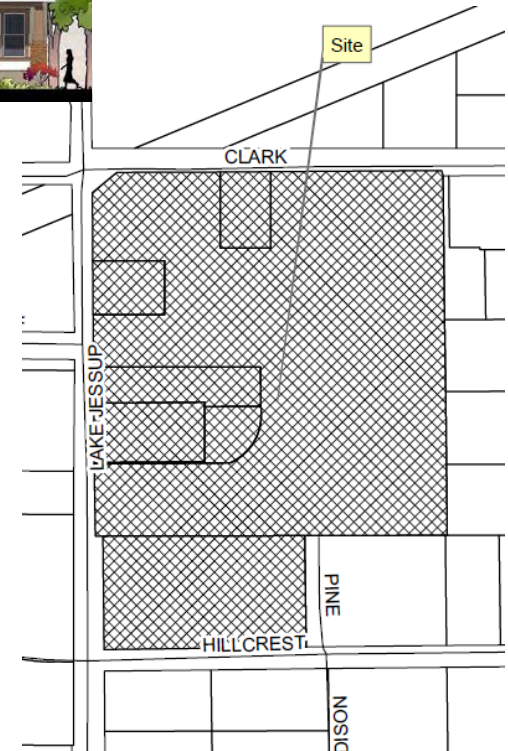
51 single family townhome



Evans Square



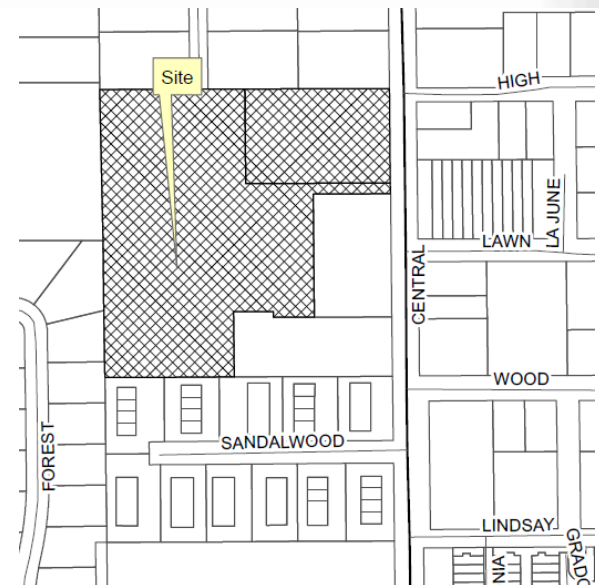
30 single family residential units and 1
Foundation use property



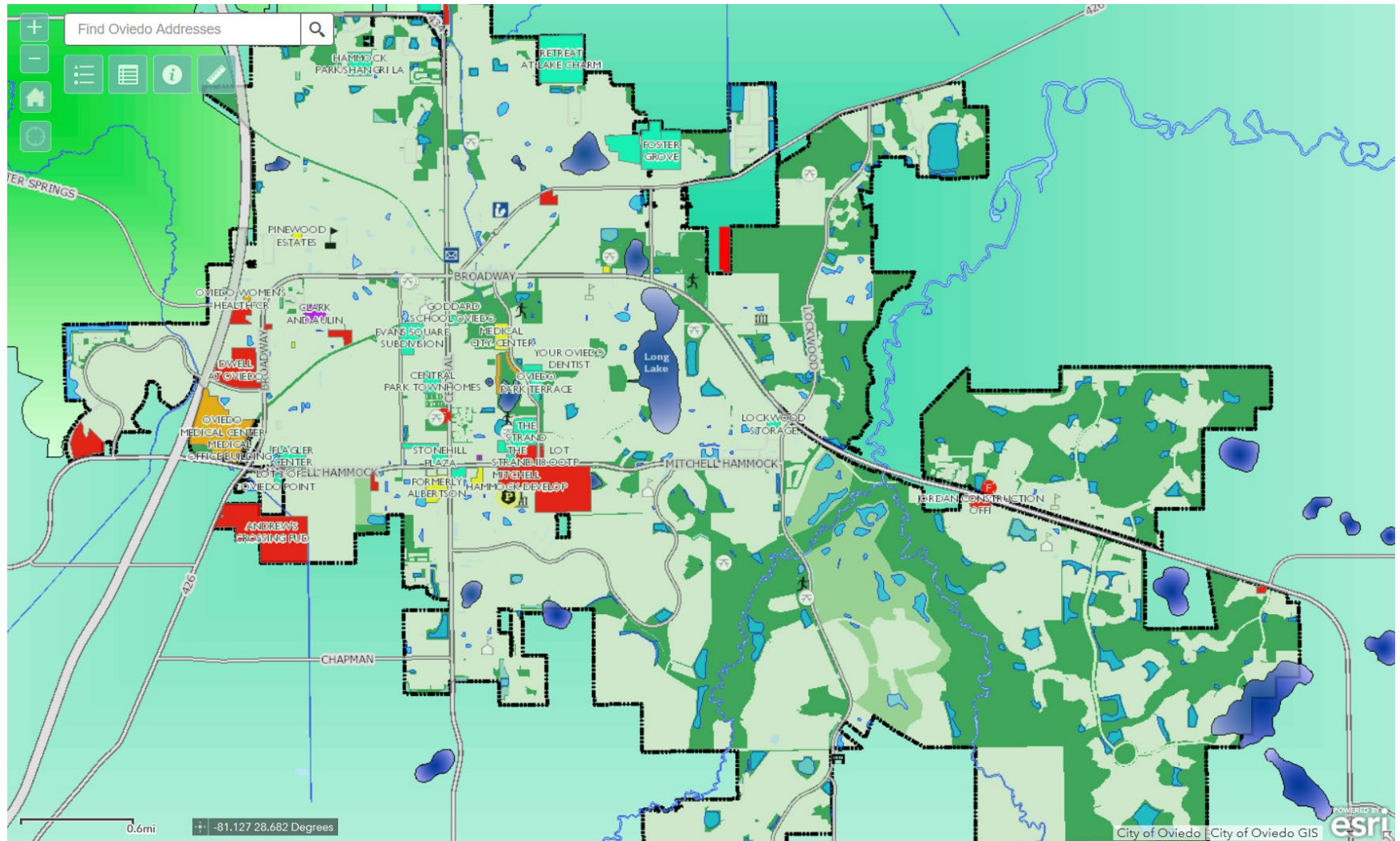
Central Park Townhomes



(68) townhome gated community

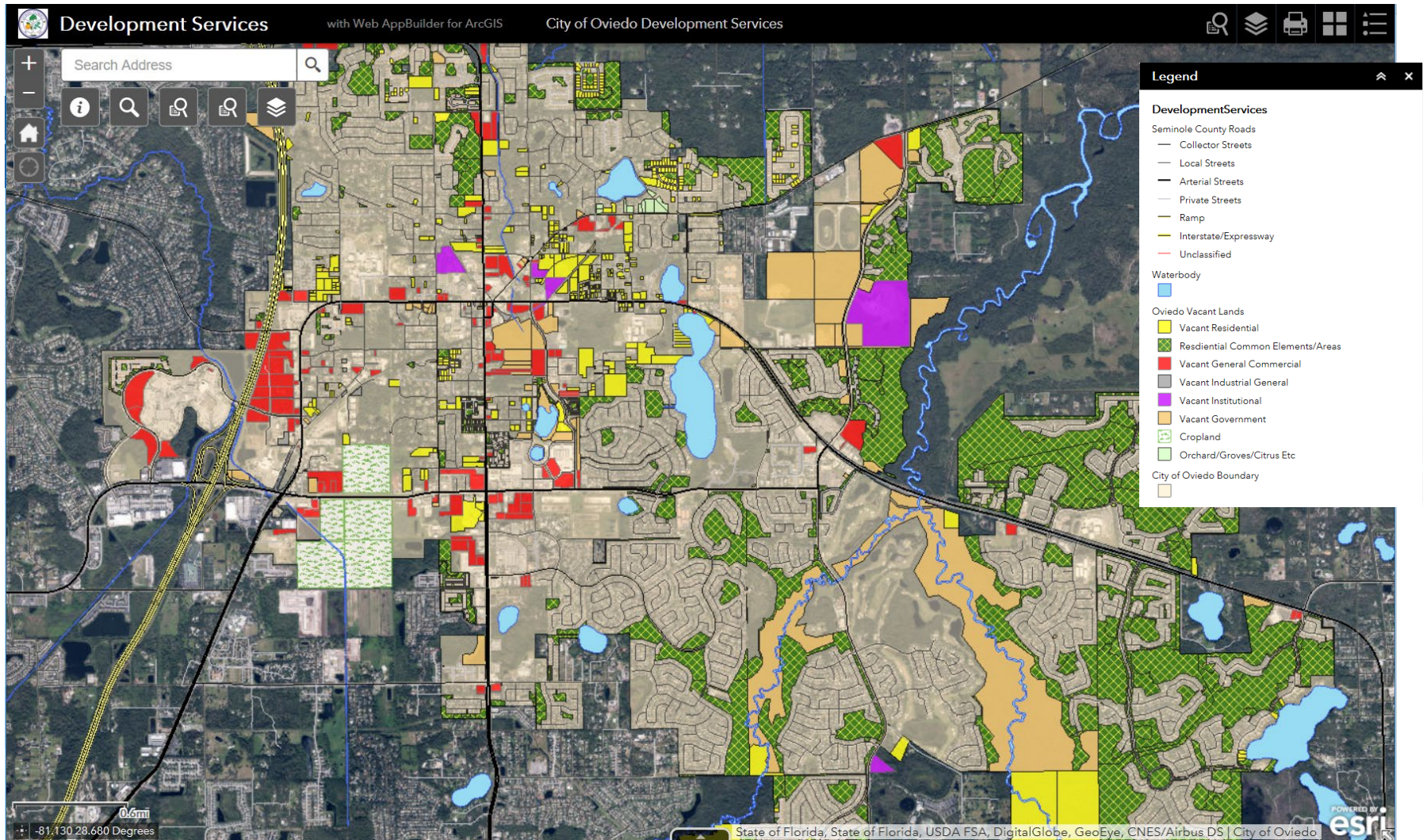


City's website – map of project status



<http://oviedo.maps.arcgis.com/apps/webappviewer/index.html?id=b3338351fc084781acc203e6b3989e35>

City's website – map of vacant land



<http://oviedo.maps.arcgis.com/apps/webappviewer/index.html?id=7ccf5d710f09417b9bd1751514915dad>

OTHER DEVELOPMENTS

Oviedo on the Park

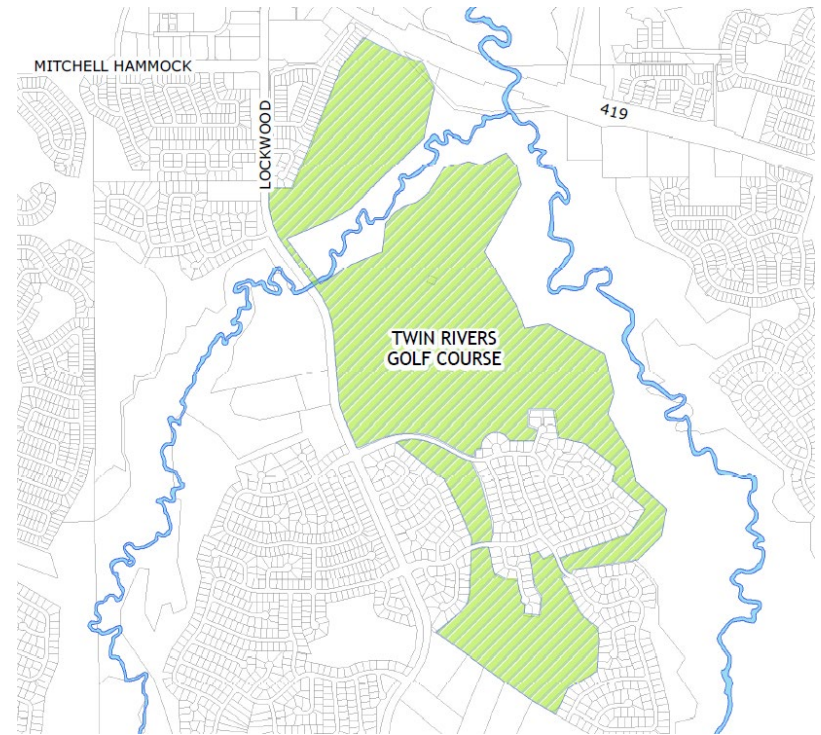


Rec and Parks – Center Lake Park



The new park includes a Cultural Center with a large banquet room, large outdoor Amphitheatre, small outdoor stage, Veterans Tribute, Wet deck, Dog Park, playground, Boat House for paddle boat rentals and a Lakeside Promenade.

Rec and Parks - Twin Rivers Golf Club

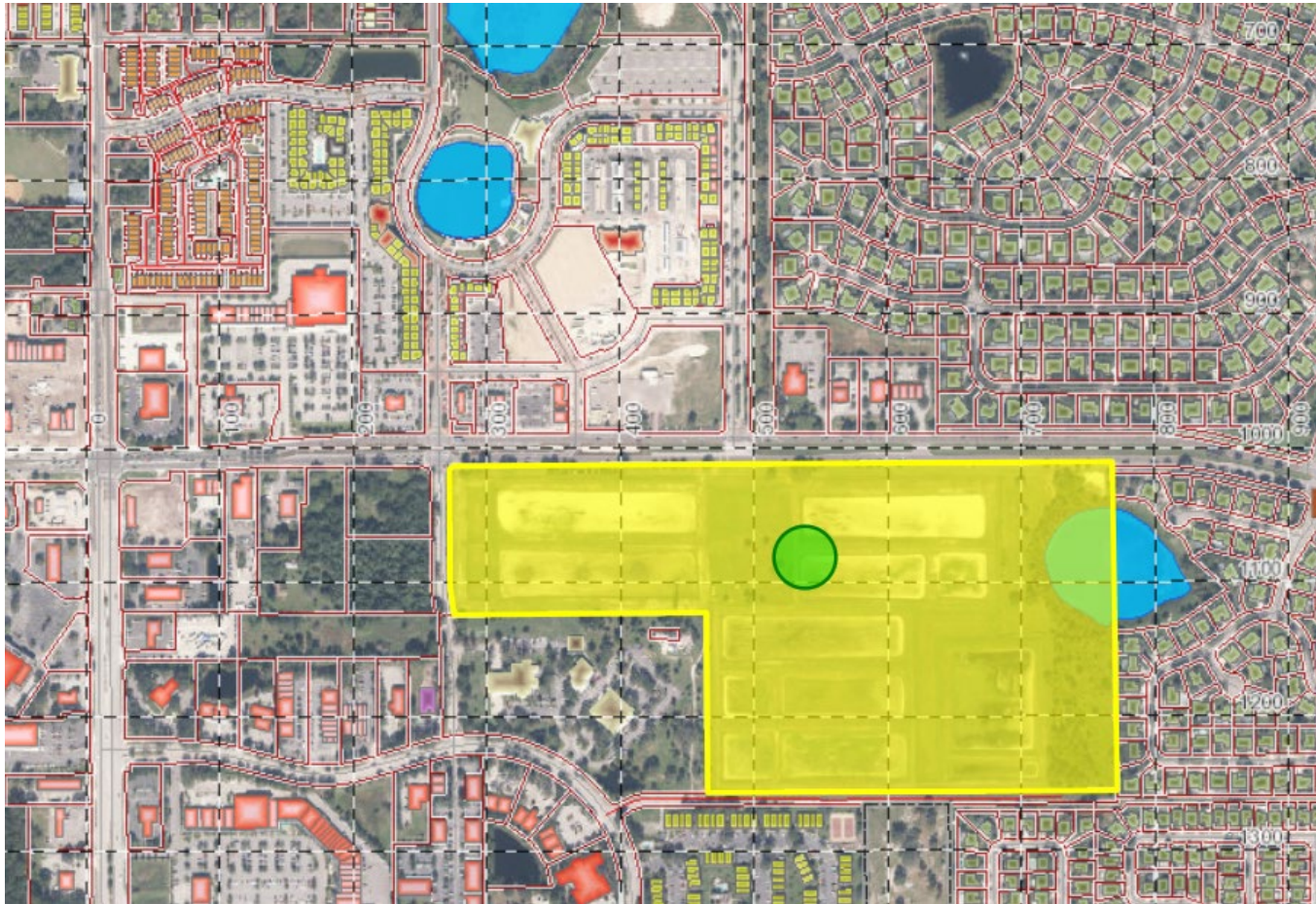


New Police Station



**NEW POLICE OFFICE BUILDING
(Conceptual)**

New Downtown extension



The percolation pond area – Comp Plan and Zoning Map amendments

Public Art program

Ordinance No.1653 approved the Public Arts Policy and the Public Arts Board

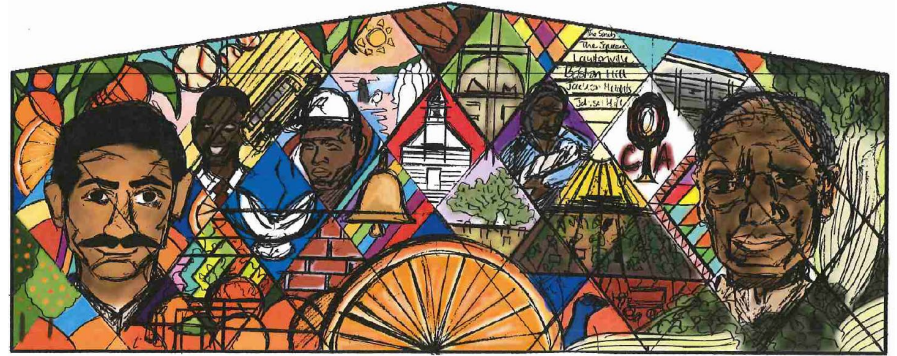
Board Composition

- 9 members + 1 Seminole Cultural Arts Council member (non-voting)

Funding:

- Loans, grants, donations
- Today the PAB fund has a total of \$23,500 from donations from developers

Next project: Mural at Center Lake
Call to artist to be announced
Theme: Oviedo Postcard



First project: Mural at Round Lake Park
Call to artist: Xavier Moss, winner of the mural design for Round Lake Park
Theme: Celebrate the Black History of Oviedo

